

IN THIS ISSUE

Argentina
Australia
Chile
Cyprus
Ecuador
EU
Guatemala
Japan
Israel
Lebanon
Pakistan
Russia
SACU
Slovenia
Tunisia
US

DENIED PARTY UPDATES

US

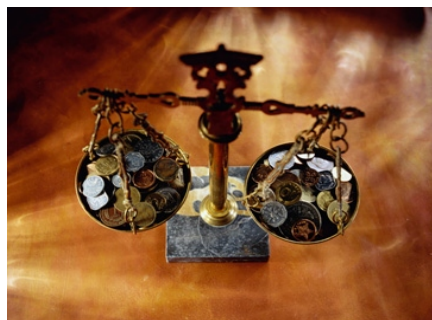
23 denied parties have been added, 2 modified and 1 deleted.

Source: Department of Commerce (Bureau of Industry and Security) and Department of State; Office of Foreign Assets Control

QUOTA UPDATES

The quota updates for this week include:

1. EU Quota fill-rates
2. US Absolute Quota fill-rates
3. US Tariff Rate Quota fill-rates.



LANDED COST UPDATES

AMERICAS

ARGENTINA

Update on tariff schedule with changes in general duty rates, product descriptions and addition and deletion of certain HTS positions. The following HTS chapters are affected: 01, 06, 16, 30, 34, 39, 40, 41, 44, 73, 84, 85, 87, 90, 95, 96 and 97.

Source: Argentina Customs

CHILE

Duties have been updated for several poultry products. The following HTS chapter is affected: 2.

Source: National Customs Service

ECUADOR

Ecuador Customs issued changes on the 2008 tariff schedule affecting Duty, VAT and other taxes affecting all the chapters.

Source: Ecuador Customs

GUATEMALA

Guatemala Customs has issued new HTS numbers and changes in duty rates. The following HTS chapters are affected: 07, 12, 22, 38, 39, 54, 59 and 70.

Source: Ministers Council for Centroamérica Economic Integration

US

United States International Trade Commission has issued the 2008 Tariff schedule. This update makes changes to HTS descriptions across all chapters.

Source: United States International Trade Commission

ASIA-PACIFIC

AUSTRALIA

Indexation of certain customs and excise tariff duty rates on products like Spirits, Beer and Tobacco have been published by the Australian Customs Service. The following HTS chapters are affected: 22 and 24.

Source: Australian Customs Service

PAKISTAN

Insertion of Preferential Duty Rates with SAFTA issued by Ministry of Finance and Revenue, Government of Pakistan affecting all chapters.

Source: Pakistan Customs

MIDDLE-EAST/AFRICA

ISRAEL

Israeli Customs and VAT announced addition of HS, change in default duty, change in HS description, EU rate, EFTA rate, PTR Tax for nuts, wheat or flour, preparation of cereals, strawberry, beer made from malt, tobacco for cigarettes and fuel oil as per the Customs Tariff update numbers - 1523, 1524, 1525, 1526. The following HTS chapters are affected: 08, 11, 20, 22, 24 and 27.

Source: Israeli Customs and VAT

LEBANON

Update on Lebanon - EFTA Preferential Agreement affecting many chapters.

Source: Lebanon Customs

ON THE ANVIL**Updates being processed:**

Argentina
Australia
Austria
Botswana
Brazil
Canada
Chile
China
EU
India
Israel
Lesotho
Malaysia
Mexico
Namibia
New Zealand
Saudi Arabia
South Africa
Swaziland
Switzerland
Taiwan
Turkey
US
Venezuela
Vietnam

TRADE WATCH**Uranium Agreement between Russia and US**

The Department of Commerce has issued a press release announcing that the US and Russia have signed an agreement which allows for sales of Russian uranium products directly to US utility companies under a quota for Russian exports during 2014 and 2020. Russia will also be able to export smaller quantities of uranium products during the years 2011 through 2013.

Ukraine on WTO approval of it Accession Terms

On February 5, 2008, the World Trade Organization (WTO) approved the terms of Ukraine's accession to the WTO, paving the way for Ukraine's membership in the WTO. The State Department and the Office of the US Trade Representative both issued press releases offering their

LANDED COST UPDATES contd...**LESOTHO**

Change in General duty & EFTA preferential for certain products related to Paper, Paper Pulp & Paperboard. The following HTS chapter is affected: 48.

Source: *South African Revenue Service (SARS)*

NAMIBIA

Change in General duty & EFTA preferential for certain products related to Paper, Paper Pulp & Paperboard. The following HTS chapter is affected: 48.

Source: *South African Revenue Service (SARS)*

SWAZILAND

Change in General duty & EFTA preferential for certain products related to Paper, Paper Pulp & Paperboard. The following HTS chapter is affected: 48.

Source: *South African Revenue Service (SARS)*

TUNISIA

Addition of Tunisia - Turkey Bilateral Trade Agreement affecting many products across the Tariff.

Source: *Tunisian Customs*

EUROPE**CYPRUS**

Cyprus is adopting the Euro as of January 1, 2008. The excise rates have been incorporated in Euro (instead of CYP). The following HTS chapters are affected: 22, 24 and 27.

Source: *Cyprus Customs*

EU

The EU has signed a Trade Agreement with Montenegro.

Source: *EU Commission*

RUSSIA

Change in HS descriptions and import duties, addition of HS numbers and MFN disclaimers. The following HTS chapters are affected: 06, 25, 68, 70, 88, 90 and 94.

Source: *Russian Customs*

SLOVENIA

Slovenian excise rates have been updated to reflect the change in currency from SIT to EUR. The following HTS chapters are affected: 22, 24 and 27.

Source: *Slovenian Customs*

REGULATORY UPDATES**AMERICAS****US**

1. ECCN 1A002, 6A004 6A995, 6E201 and 7A101 have been modified based on US Department of Commerce (Bureau of Industry and Security) updates. The following ECN categories are affected: 1, 6 and 7.
2. The Bureau of Industry and Security (BIS) removes ECCN 6A005.a.4 from the NP control paragraph of the License Requirements section. The following ECN category is affected: 6.

Source: *Department of Commerce (Bureau of Industry and Security)*

ASIA-PACIFIC**JAPAN**

Ministry of Agriculture, Forestry and Fisheries has decided to lift an import

TRADE WATCH contd..

congratulations.

Ukraine applied for WTO membership in 1993, and the Working Party concluded the negotiations on 25 January 2008 under the chairmanship of Chile's Ambassador. The General Council approved the Working Party report, the market access schedules on goods and services, the General Council Decision and the Protocol of Accession.

Ukraine would have to ratify the deal by 4 July 2008. An extension of this deadline would be possible if necessary. Ukraine will become a WTO member 30 days after the ratification.

Annual User Fee for Customs Broker Permits and National Permits

The US Customs and Border Protection previously issued a general notice announcing that the 2008 annual user fee of \$138 assessed for each Customs Broker Permit and National Permit held by an individual, partnership, association, or corporation is due by February 15, 2008.

At that time, CBP stated that it is expected that the annual user fee for such permits for subsequent years will be due on or about the twentieth of January of each year.

REGULATORY CONTROLS UPDATES contd...

prohibition on poultry products originating in Canada under the Domestic Animal Infectious Disease Control Law. The following HTS chapters are affected: 01, 02 and 16.

Source: Ministry of Agriculture, Forestry and Fisheries

EUROPE**EU**

The EU Commission has imposed a definitive anti-dumping duty on imports of dihydromyrcenol of purity by weight of 93% or more, originating in India. The following HTS chapter is affected: 29.

CONTRACT ASSESSORIAL UPDATES contd...**Fuel Surcharge Updates:****EUR-MED**

EMTA members will increase the Low Sulphur Fuel Surcharge effective February 15th: Israel: USD 9 per TEU; Cyprus: EURO 6 per TEU

CARRIER SERVICE UPDATES**ASIA-EUR**

Evergreen and Mearsk are pleased to announce a co-operative agreement on Asia-Europe services. The exchange of slots between Evergreen's China-Europe-Mediterranean (CEM) service and Maersk's Far East to Europe (AE2) service will commence March 2008. The goal of the agreement is to significantly upgrade service coverage, as well as more efficiently utilize capacity on the trade route, all in an effort to positively impact performance in terms of operating costs.

INTRA-ASIA

Maersk Line is pleased to announce its new Intra-Asia service (the IA-3). It will connect the ports of Kaohsiung, Xiamen, and Hong Kong with Tanjung Pelepas (Malaysia) and Singapore. The service will provide customers with fast pre-carriage to hub ports and direct access to Maersk's global network.

SIGN UP FOR FREE USAGE

To learn more about Management Dynamics' products and services, or to request free usage of our products, e-mail us at: updates@ManagementDynamics.com

You can also contact us at:

MANAGEMENT DYNAMICS, INC.

One Meadowlands Plaza
East Rutherford, NJ 07073
(T) 201 935 8588 (F) 201 935 5187
www.ManagementDynamics.com

